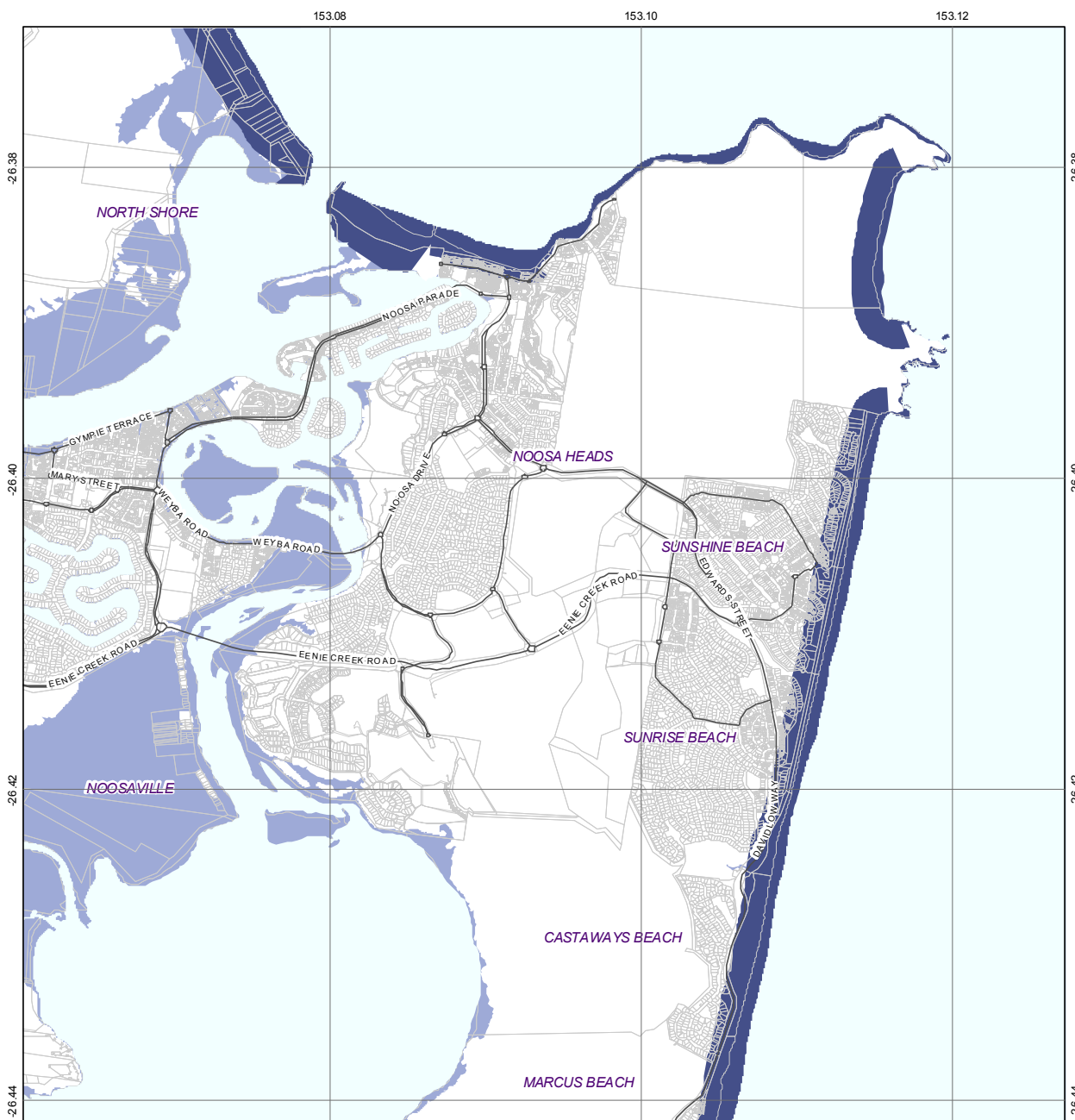


Appendix A – Coastal Hazard Area Maps

<http://www.derm.qld.gov.au/coastalplan/pdf/qcp-web.pdf>



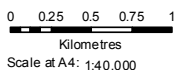
Notes

Coastal hazard area maps should not be used for development assessment purposes until the *Queensland Coastal Plan and Coastal Protection and Management Act 1995* amendments commence and the new erosion prone areas are formally declared. Only the statutory erosion prone area plans should be used in the assessment of development applications. Plans for each local government area are available from the Department of Environment and Resource Management website <www.derm.qld.gov.au>.

The map should be used as a guide only. Field surveys are recommended to verify feature boundaries.

Disclaimer

Whilst every care is taken to ensure the accuracy of this product, the Department of Environment and Resource Management makes no representations or warranties about its accuracy, reliability, completeness or suitability for any particular purpose and disclaims all responsibility and all liability (including without limitation, liability in negligence) for all expenses, losses, damages (including indirect or consequential damage) and costs which you may incur as a result of the product being inaccurate or incomplete in any way and for any reason. This map is intended to be printed on an A4 page.



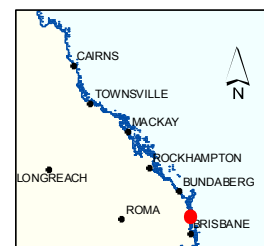
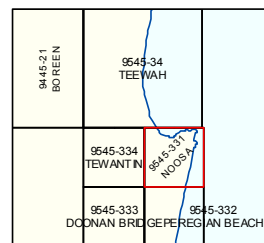
Coastal Hazard Areas Map Erosion Prone Area

9545-331 NOOSA

Indicative Erosion Prone Area (including projected climate change impacts to 2100) *

- Erosion due to storm impact and long term trends of sediment loss and channel migration
- Erosion and permanent tidal inundation due to sea level rise

* The erosion prone areas shown on this map are indicative of the erosion and inundation extent that may occur with climate change impacts up to 2100.





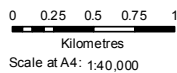
Notes

Coastal hazard area maps should not be used for development assessment purposes until the *Queensland Coastal Plan and Coastal Protection and Management Act 1995* amendments commence and the new erosion prone areas are formally declared. Only the statutory erosion prone area plans should be used in the assessment of development applications. Plans for each local government area are available from the Department of Environment and Resource Management website <www.derm.qld.gov.au>.

The map should be used as a guide only. Field surveys are recommended to verify feature boundaries.

Disclaimer

Whilst every care is taken to ensure the accuracy of this product, the Department of Environment and Resource Management makes no representations or warranties about its accuracy, reliability, completeness or suitability for any particular purpose and disclaims all responsibility and all liability (including without limitation, liability in negligence) for all expenses, losses, damages (including indirect or consequential damage) and costs which you may incur as a result of the product being inaccurate or incomplete in any way and for any reason. This map is intended to be printed on an A4 page.



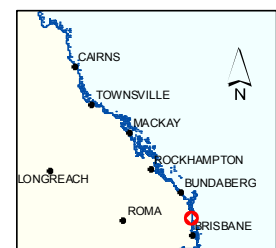
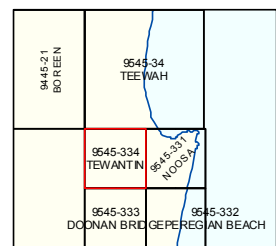
**Coastal Hazard Areas Map
Erosion Prone Area**

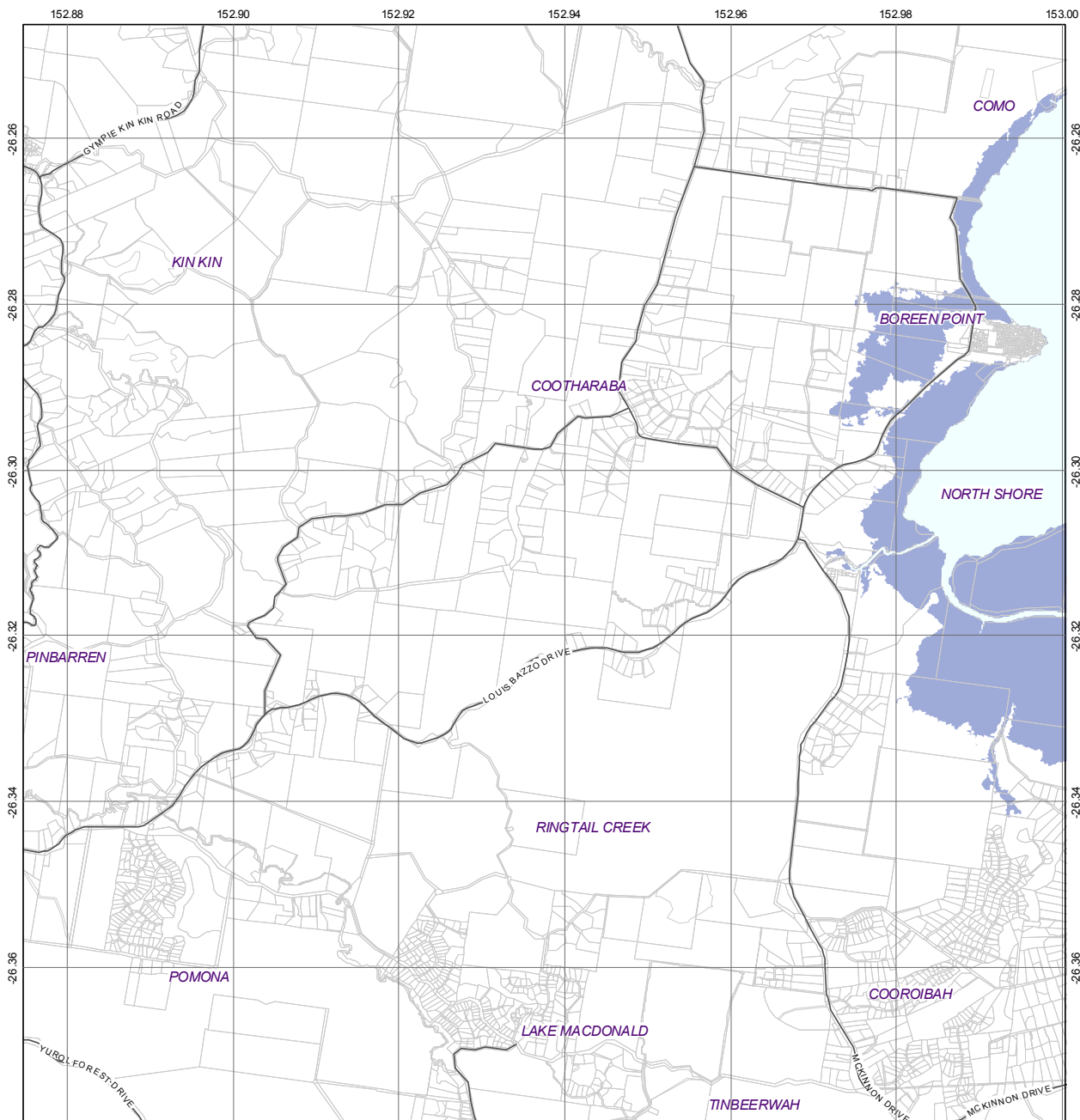
9545-334 TEWANTIN

Indicative Erosion Prone Area (including projected climate change impacts to 2100) *

- Erosion due to storm impact and long term trends of sediment loss and channel migration
- Erosion and permanent tidal inundation due to sea level rise

* The erosion prone areas shown on this map are indicative of the erosion and inundation extent that may occur with climate change impacts up to 2100.





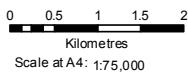
Notes

Coastal hazard area maps should not be used for development assessment purposes until the *Queensland Coastal Plan and Coastal Protection and Management Act 1995* amendments commence and the new erosion prone areas are formally declared. Only the statutory erosion prone area plans should be used in the assessment of development applications. Plans for each local government area are available from the Department of Environment and Resource Management website <www.dem.qld.gov.au>.

The map should be used as a guide only. Field surveys are recommended to verify feature boundaries.

Disclaimer

Whilst every care is taken to ensure the accuracy of this product, the Department of Environment and Resource Management makes no representations or warranties about its accuracy, reliability, completeness or suitability for any particular purpose and disclaims all responsibility and all liability (including without limitation, liability in negligence) for all expenses, losses, damages (including indirect or consequential damage) and costs which you may incur as a result of the product being inaccurate or incomplete in any way and for any reason. This map is intended to be printed on an A4 page.



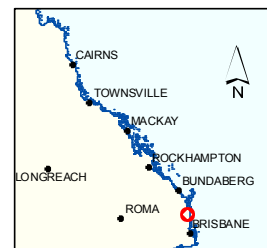
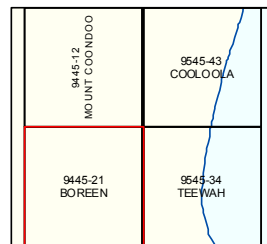
**Coastal Hazard Areas Map
Erosion Prone Area**

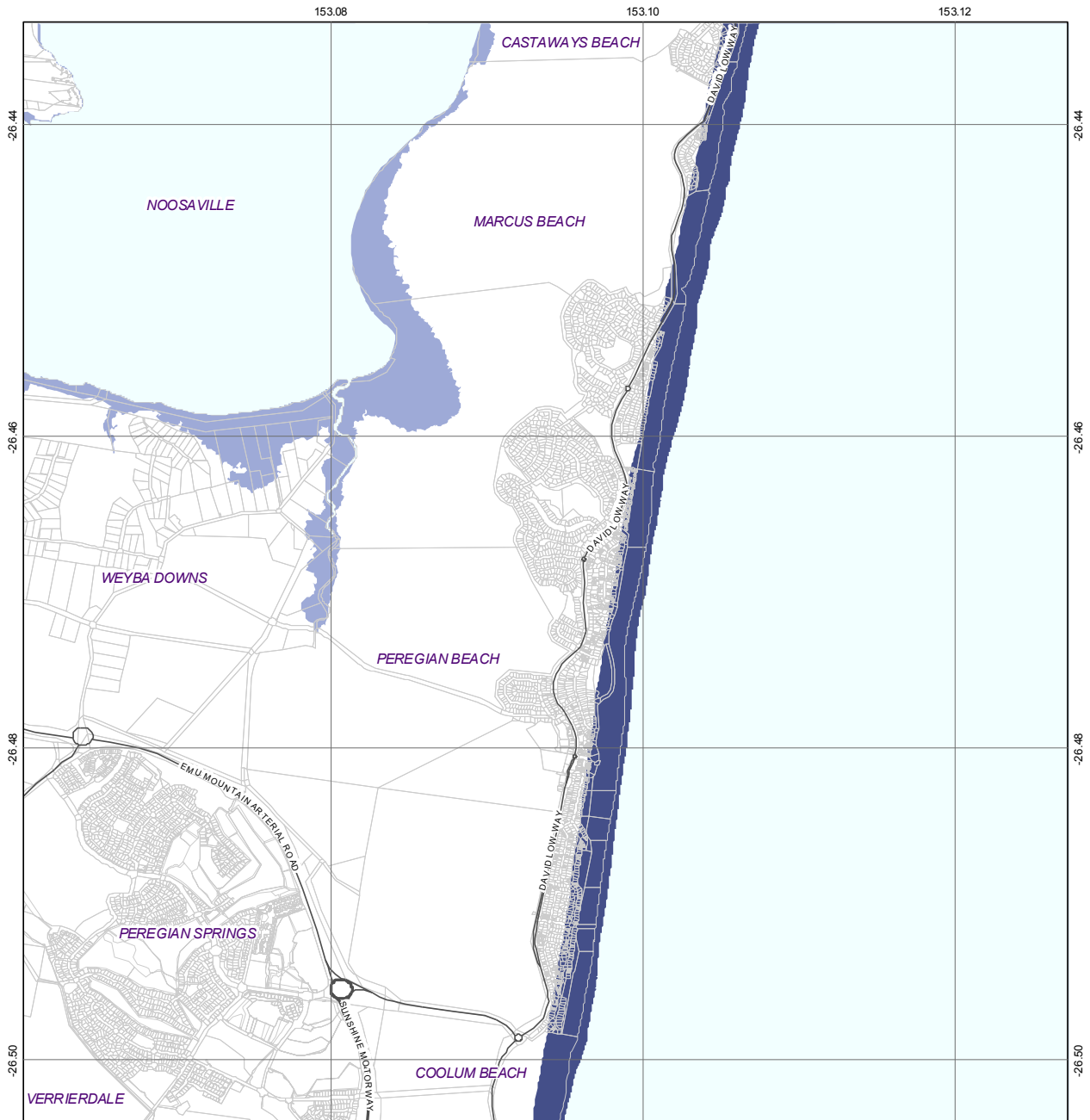
9445-21 BOREEN

Indicative Erosion Prone Area (including projected climate change impacts to 2100) *

- Erosion due to storm impact and long term trends of sediment loss and channel migration
- Erosion and permanent tidal inundation due to sea level rise

* The erosion prone areas shown on this map are indicative of the erosion and inundation extent that may occur with climate change impacts up to 2100.





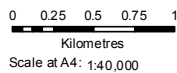
Notes

Coastal hazard area maps should not be used for development assessment purposes until the *Queensland Coastal Plan and Coastal Protection and Management Act 1995* amendments commence and the new erosion prone areas are formally declared. Only the statutory erosion prone area plans should be used in the assessment of development applications. Plans for each local government area are available from the Department of Environment and Resource Management website <www.derm.qld.gov.au>.

The map should be used as a guide only. Field surveys are recommended to verify feature boundaries.

Disclaimer

Whilst every care is taken to ensure the accuracy of this product, the Department of Environment and Resource Management makes no representations or warranties about its accuracy, reliability, completeness or suitability for any particular purpose and disclaims all responsibility and all liability (including without limitation, liability in negligence) for all expenses, losses, damages (including indirect or consequential damage) and costs which you may incur as a result of the product being inaccurate or incomplete in any way and for any reason. This map is intended to be printed on an A4 page.



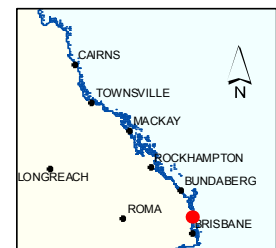
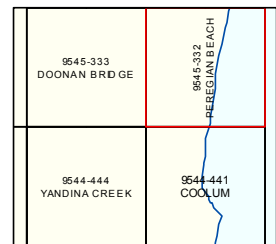
**Coastal Hazard Areas Map
Erosion Prone Area**

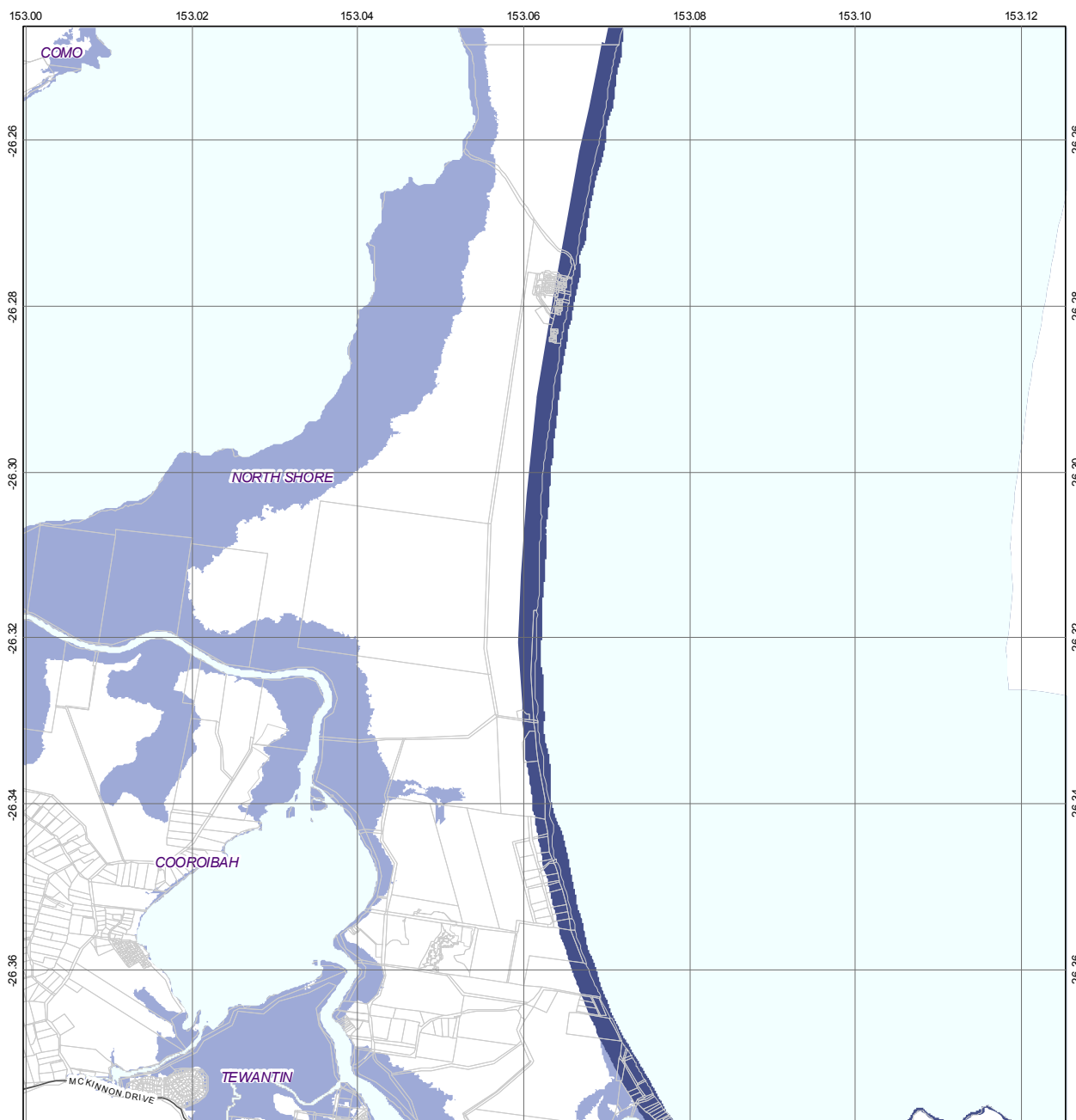
9545-332 PEREGIAN BEACH

Indicative Erosion Prone Area (including projected climate change impacts to 2100) *

- Erosion due to storm impact and long term trends of sediment loss and channel migration
- Erosion and permanent tidal inundation due to sea level rise

* The erosion prone areas shown on this map are indicative of the erosion and inundation extent that may occur with climate change impacts up to 2100.





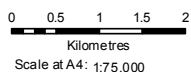
Notes

Coastal hazard area maps should not be used for development assessment purposes until the *Queensland Coastal Plan and Coastal Protection and Management Act 1995* amendments commence and the new erosion prone areas are formally declared. Only the statutory erosion prone area plans should be used in the assessment of development applications. Plans for each local government area are available from the Department of Environment and Resource Management website <www.dem.qld.gov.au>.

The map should be used as a guide only. Field surveys are recommended to verify feature boundaries.

Disclaimer

Whilst every care is taken to ensure the accuracy of this product, the Department of Environment and Resource Management makes no representations or warranties about its accuracy, reliability, completeness or suitability for any particular purpose and disclaims all responsibility and all liability (including without limitation, liability in negligence) for all expenses, losses, damages (including indirect or consequential damage) and costs which you may incur as a result of the product being inaccurate or incomplete in any way and for any reason. This map is intended to be printed on an A4 page.



**Coastal Hazard Areas Map
Erosion Prone Area**

9545-34 TEEWAH

Indicative Erosion Prone Area (including projected climate change impacts to 2100) *

- Erosion due to storm impact and long term trends of sediment loss and channel migration
- Erosion and permanent tidal inundation due to sea level rise

* The erosion prone areas shown on this map are indicative of the erosion and inundation extent that may occur with climate change impacts up to 2100.

